

## We also have a showroom. Experience Our Products in Action.

You can bring your own pallets and carts to try them out.

Please contact us through the inquiry form on our official website to make an appointment before visiting.

### Tokyo Aoto Showroom 1st Floor, PLiBOT Head Office

TOKYO



TEL:03-6662-6595

3-2-2 Aoto, Katsushika-ku, Tokyo 125-0062

A 10-minute walk from Ohanajaya Station South Exit (Keisei Main Line)

A 15-minute walk from Aoto Station East Exit (Keisei Main Line)

MAP



### Hyogo Kobe Showroom Technocrat Port Island Hangar ANNEX

KOBE



TEL:078-330-9182

4-2-14 Minatojima Minami-cho, Chuo-ku, Kobe City, Hyogo, 650-0047

A 10-minute walk from Iryo Center Station (Port Liner)

A 11-minute walk from Keisan Kagaku Center Station (Port Liner)

MAP



Watch PLiBOT Gen.2 in action

PLiBOT YouTube channel

<https://www.youtube.com/@plibot6954>



**PLiBOT**  
Pliability Robotics Platform

#### PLiBOT Co.,Ltd.

##### Head Office

3-2-2 Aoto, Katsushika-ku, Tokyo, 125-0062 TEL:03-6662-6595

##### CENTRAL Japan Office

3-1 Hatadacho, Nakagawa-ku, Nagoya City, Aichi, 454-0860 TEL: 052-398-5651

##### WEST Japan Office

4-2-14 Minatojima Minamicho, Chuo-ku, Kobe City, Hyogo, 650-0047 TEL:078-330-9182



[www.plibot.co.jp](http://www.plibot.co.jp)

PLiBOT Co., Ltd. is a group company of Obayashi Corporation.

Even robots  
need teamwork.

# Pliability Robotics Platform

Next-generation solutions created through integration  
between robots and equipment.

PLiBOT Gen.2



**PLiBOT**



# Becoming a Hub for Automation and Robotization

## The PLiBOT Gen.2 Platform

PLiBOT Gen.2 is an integrated control platform that enables seamless coordination between a wide range of autonomous mobile robots (AMRs) and automated equipment. It delivers solutions to challenges in manufacturing, logistics, and construction, driving efficiency across industries.

What the PLiBOT Gen.2 can do .....



### Unified control and management of AMRs and automated equipment

Coordinate AMRs—including unmanned forklifts and cleaning robots—with other equipment such as elevators, automatic shutters, and palletizers.



### Seamlessly integrate robots and equipment from multiple manufacturers

By integrating robots and equipment of different types, brands, and control standards, PLiBOT Gen.2 drives automation and unmanned operations in factories and warehouses—overcoming brand barriers.



### Create a safe collaborative environment between humans and robots

Beyond robot and equipment integration, PLiBOT Gen.2 connects to remote monitoring devices—minimizing collision risks and ensuring a safe, collaborative environment for humans and robots.



### Integration with existing material and sales management systems is also possible.

By connecting to upper-level systems—such as production management system (PMS), enterprise resource planning (ERP), and customer relationship management (CRM) systems—PLiBOT Gen.2 enables cross-departmental workflow optimization.



Facing these challenges in factory automation and robotics?

- ✓ Advancing factory automation and unmanned operations is desired, but budgets are limited and it's unclear what should be done first.
- ✓ Combining robots from any manufacturer to create a system tailored to our company's needs.
- ✓ Introducing AMRs into areas where people work.
- ✓ Centralizing control of robots and industrial equipment, and integrating them with inventory management systems.
- ✓ Because operating methods are difficult to master, tasks often become specialized, creating reliance on specific operators for each robot.



Whether facing general challenges or specific issues,

**PLiBOT Gen.2 can handle them all!**

Every business faces unique concerns, and simply introducing robots often falls short of desired results. PLiBOT Gen.2 is an adaptable platform designed to address a wide range of your needs.

← Check inside for more information!



# PLiBOT Gen.2 Solves a Variety of Problems! Automate Operations, Save Labor, and Reduce Costs.

- ✓ Advancing factory automation and unmanned operations is desired, but budgets are limited and it's unclear what should be done first.

## PLiBOT Gen.2 handles it Supports gradual expansion while utilizing existing equipment

PLiBOT Gen.2 can link systems with different control standards, allowing the use of existing assets, including robots and automated machinery, while gradually introducing new equipment in order of priority. Its high expandability also enables flexible integration of future models as they become available. If you are unsure where to start with automation or unmanned operations, we offer ideal solutions starting from the implementation planning stage.



Unmanned automatic delivery vehicles  
Forklifts  
Cleaning robots  
Picking robots, etc.

- ✓ Combining robots from any manufacturer to create a system tailored to our company's needs.

## PLiBOT Gen.2 handles it Choose robots and equipment that fit your purpose and application

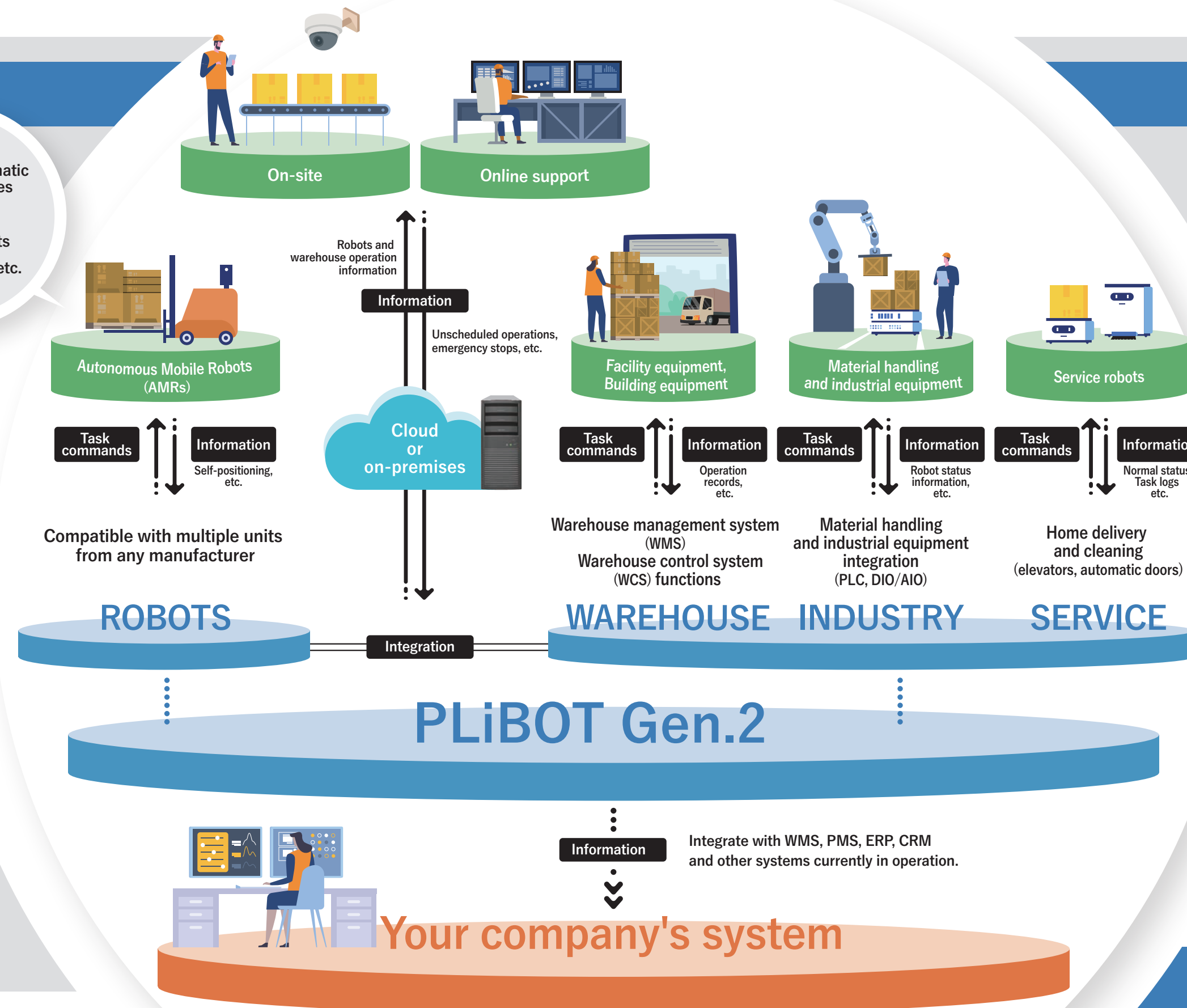
You can freely select and purchase robots and equipment from any manufacturer, both domestic and overseas, regardless of control standards. Consultation services for issues such as equipment malfunctions can also be consolidated, simplifying the management of multiple vendors. Robots coordinate with each other by integrating their maps. This allows you to combine the optimal models for your company, while we can also manufacture customized AMRs to meet your specific requirements.



- ✓ Introducing AMRs into areas where people work.

## PLiBOT Gen.2 handles it Building a safe collaborative environment between humans and robots that meets global standards

AMRs available for new installations comply with international safety standard ISO 3691-4 (JIS D6802:2022). Safety laser scanners prevent collisions with people, while safety encoders and motion controllers monitor speed and direction. A remote monitoring system can also be integrated for enhanced safety, ensuring robots can be seamlessly work with your current production lines while maintaining strict safety measures.



- ✓ Centralizing control of robots and industrial equipment, and integrating them with inventory management systems.

## PLiBOT Gen.2 handles it Seamlessly integrates with your existing systems and data

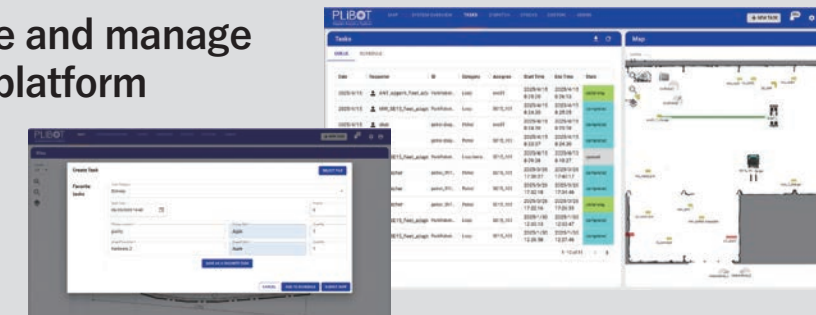
Using an Application Programming Interface or other connections to higher-level systems, you can seamlessly link existing PMS, ERP, CRM, and other systems to integrate data. This enables data to be shared with systems already in use within your company, improving operational efficiency across departments.



- ✓ Because operating methods are difficult to master, tasks often become specialized, creating reliance on specific operators for each robot.

## PLiBOT Gen.2 handles it Enables anyone to easily operate and manage multiple robots through a single platform

The operation screen, accessible from PCs and tablets, is designed with ease of use in mind. It also offers customization options tailored to the modules used. Previously, tasks often required personnel familiar with each robot due to differences in manufacturers and control standards. Today, robots can be operated and managed in a unified way, improving efficiency and reducing labor.



### Solutions by industry

#### Manufacturing

- Integration with existing equipment such as palletizers, conveyor systems, automatic shutters, and elevators
- Integration of different types of AMRs, including forklift, low-profile, and cleaning models
- Safe operation even when workers are on the transport route

#### Logistics

- Integration with existing systems such as vertical lifts, transfer units, and conveyors
- Integration of different types of AMRs, including forklift and towing
- Safe operation even when workers are on the transport route

#### Medical treatment

- Integration with existing systems such as elevators and automatic doors
- Simultaneous operation of multiple AMRs across multiple floors
- Integration of different types of AMRs, including cabin, lift, and cleaning transport carts
- Safe operation even when staff members are on the transport route

We have formed a business ecosystem, a network of partnerships with over 40 companies in Japan and abroad, enabling us to offer proposals that combine partner products. Please feel free to contact us for more information.